

UNPM, UNPC Series Unity® Prepackaged Cameras



Security Systems



- Dinion™ Monochrome or Color Camera and Lens
Pre-wired into a Bosch Housing
- Packages Include:
 - Feed-through Mount
 - 1.5m (5ft) of Cabling
- Indoor and Outdoor Models -
Outdoor Units Include a Sunshield
- Standard and High Resolution Models Available
- 2.8–10mm and 5–50mm Lens Options
- Plug and Play Design
- Easy Installation

The UNPM Series and UNPC Series Unity® Housing Packages are complete surveillance systems that include a camera and lens installed and pre-wired into a Bosch 9480 Series housing. The package also includes an LTC 9215 Series feed-through wall mount.

These packages are available in four configurations for indoor applications and eight outdoor configurations.

Each indoor package includes a Bosch housing and feed-through wall mount, and your choice of standard or high resolution monochrome or color Dinion Camera with a 2.8–10mm vari-focal lens installed.

Outdoor packages include housing with heater and blower installed, feed-through wall mount and sunshield.

A choice of standard or high resolution, monochrome or color camera, and either 2.8–10mm or 5–50mm vari-focal lens, are available in the outdoor packages.

In addition, models UNPCH28E and UNPCH55E include the Dinion™ LTC 0455 Series high resolution color camera with its advanced Nightsense™ technology to provide exceptional performance in low light applications.

And when all is said and done, the true advantage of these surveillance packages lies with the plug and play design. Since these units come with the camera and lens factory pre-installed with back-focus adjusted, and pre-wired through the housing base, installation is quick and easy. One and one half meters (5ft) of coax and power cable are provided to wire through the included feed-through mount to the connection point.

The plug and play concept, coupled with the package's sleek design and feed-through cabling, make it a perfect solution for everyday surveillance needs.

Cameras		
Imager	Interline Transfer CCD, 1/3in. format	
Active Picture Elements		
Monochrome		
UNPMS	512H x 492V	
UNPMH	582H x 494V	
Color		
UNPCS	510H x 494V	
UNPCH	768H x 494V	
Sensitivity (3200 K)		
	Scene Illumination ¹ fc	Usable Picture (50 IRE) 1x
Monochrome		
UNPMS	0.01	0.12
UNPMH	0.009	0.09
Color		
UNPCS	0.039	0.39
UNPCH		
	DAY	0.065 0.65
	NIGHT	0.026 0.26
¹ f/1.2 lens, 89% scene reflectance		
Horizontal Resolution		
UNPMS	380 TVL	
UNPMH	570 TVL	
UNPCS	330 TVL	
UNPCH	480 TVL	
Signal-to-Noise Ratio		
	50dB	
AGC	21 dB (max)	
Electronic Shutter	Automatic, 1/60 to 1/600,000 sec.	
Backlight Compensation		
	Center Window Weighting	
White Balance		
UNPMS	N/A	
UNPMH	N/A	
UNPCS	Automatic Sensing (2500-9000K)	
UNPCH	Automatic Sensing (2500-9000K)	
Video Output	Composite Video 1.0Vp-p, 75Ω	

Ordering Information:

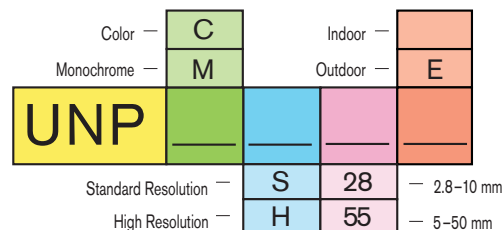
Use the following chart to create your order numbers based on the example.

Sample: UNPCH55E

- Unity Prepackaged Cameras
- Color
- High Resolution
- 5–50mm Vari-Focal Lens
- Outdoor

Synchronization	Line-Lock, Crystal-Lock	
Lens		
UNPxx-28, 28E	2.8–10mm, f/1.4 to 360, auto iris	
UNPxx-55E	5–50mm, f/1.4 to 185, auto iris	
Connector		
Video	Prewired 1.5m (5ft) coax with female BNC connector	
Power ¹	1mm ² (18AWG), 3 conductor, 1.5m (5ft) Wiring Harness with Flying Leads	
¹ Power supply input terminals are isolated from video output terminals		
Power		
Rated Voltage	24VAC, 60Hz	
Watts		
(UNPxx-28)	4w	
(UNPxx-28E, 55E)	39w	
Mechanical		
Housing		
Construction	Aluminum housing casing, neoprene gaskets, UV-resistant polymer endcaps, and all stainless steel hardware	
Finish	Gray	
Window	3mm (0.12in.) thick UV-Stabilized Polycarbonate	
Mounting	Four (4) 8mm (5/16in.) diameter fasteners (not included) are required for mounting	
Dimensions	See FIGURES 1 and 2	
Weight (approx.)	Indoor Model: 2.6kg (5.7lb) Outdoor Model: 3.5kg (7.8lb)	
Feed Through Mount		
Max Load	9kg (20lb)	
Size	30cm (12in.)	
Weight	0.4kg (0.9lb)	

Unity®
Prepackaged Cameras
Quick Reference
Ordering Guide



Environmental

Operating Temperature With fixed lens: at an external temperature of

-40°C to +50°C (-40°F to +122°F), the housing will maintain the internal temperature between -20°C and 55°C (-4°F to +131°F).

With zoom lens: at an external temperature of -30°C to +50°C (-22°F to +122°F), the housing will maintain the internal temperature between -10°C and 55°C (+14°F to +131°F).

Humidity 0% to 93% relative, noncondensing

Enclosure Protection IP66, Designed to NEMA-4

Product Regulatory Compliance

Electromagnetic Compatibility (EMC)

Complies with FCC Part 15, ICES-003 and CE regulations

Product Safety Complies with CE regulations, UL, CSA, EN and IEC Standards

Accessories

Sunshield Included (outdoor models only)

Wall Mount Included

Figure 1 UNPxx28 Series - Indoor Models

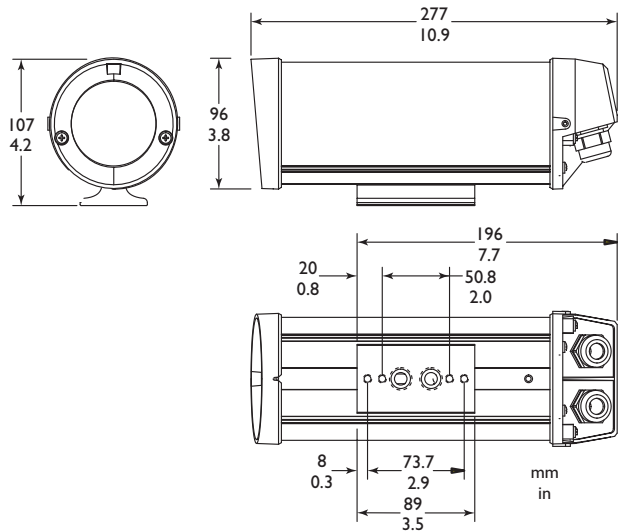
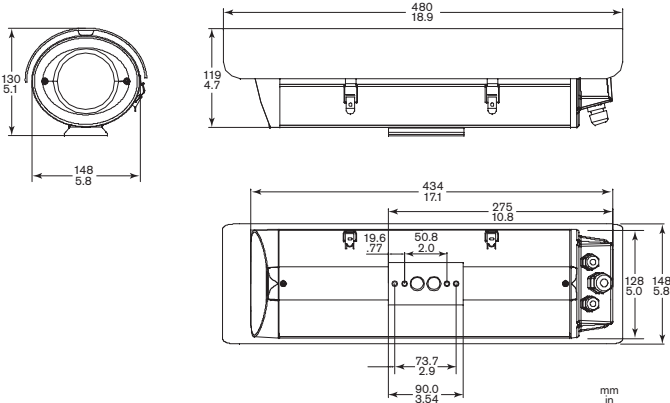


Figure 2 UNPxx28E, UNPxx55E Series - Outdoor Models



Bosch Security Systems, Inc.
850 Greenfield Road
Lancaster, PA 17601
Tel: 800-326-3270
Fax: 717-735-6560
www.boschsecuritysystems.com

BOSCH